

**SPECIFICATION**

**A: MATERIAL:**

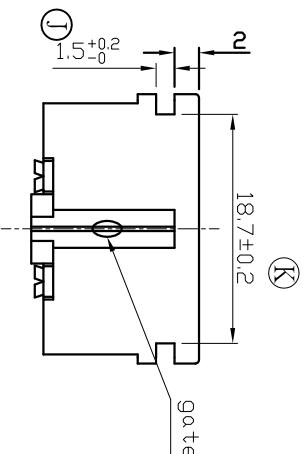
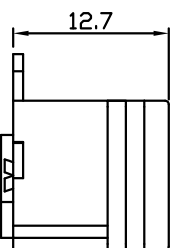
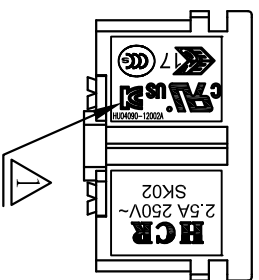
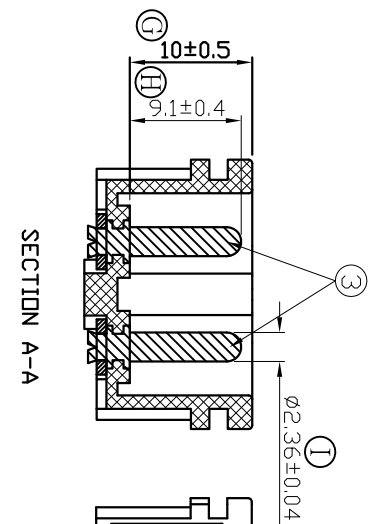
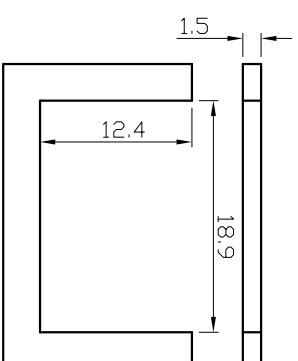
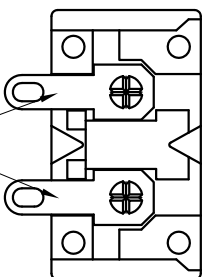
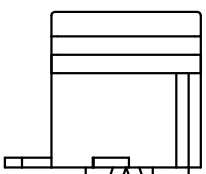
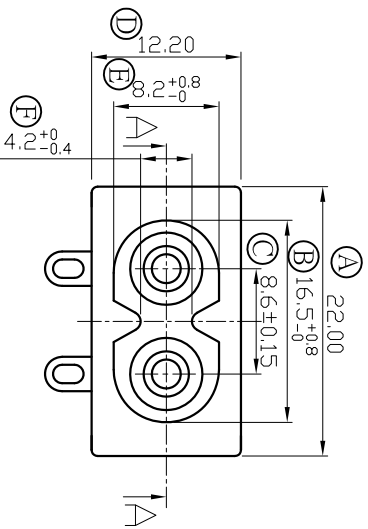
- 1. BODY: NYLON 66
- 2. TERMINAL: Cu PLATED Sn
- 3. PIN: Cu PLATED Ni

**B: CHARACTERISTICS:**

- 1. RATING: 2.5A 250V~(C-ULus, ENEC & CCC & KC)
- 2. INSULATION RESISTANCE: 100MΩ MIN. AT 500VDC
- 3. ELECTRIC STRENGTH : 3000 VAC/1MIN. LEAKAGE CURRENT UNDER 0.5mA

**C: APPROVALS: C-ULus, ENEC & CCC & KC**

**D: MATERIAL USED MUST BE COMPLY WITH HQ1-0010**



**PANEL CUT-OUT**

TOLERANCES UNLESS OTHERWISE	
未指定容許差尺寸之公差	
BASIC DIMENSIONS TOLERANCES	
UP TO 10 (10以下)	±0.3
ABOVE 10 TO 100 (10-100)	±0.5
ABOVE 100 (100 以上)	±0.8
ANGULAR DIMENSIONS (角度)	±5°
DIMENSION UNIT	mm

東莞市華之力電子有限公司 DONGGUAN HCR ELECTRONICS CO., LTD.

3																			
2																			
1	20120506	修訂 "KC" 刻字添加編號 (HU04090-12002A)																	
NO	DATE	REVISION DESCRIPTION	ISSUE	REVISE	APPROVED														

核准	AaronJin	日期	20110623	投影法	第一角	機型	INLET SOCKET
校對	RZTang	日期	20110623	比例	1:1	料號	SK02
繪圖	WeiChen	日期	20110623	路徑	ISO	料號	SK02-0101012221H
DRAWN BY		DATE		DWG. NO		ITEM NO	